
Product Datasheet

VEGF Receptor 2/KDR Antibody (orb137868)

Description

VEGF Receptor 2/KDR Antibody

Species/Host

Rabbit

Reactivity

Human

Conjugation

Unconjugated

Tested

ICC, IHC, WB

Applications
Immunogen

A synthetic peptide corresponding to a sequence in the middle region of human VEGF Receptor 2 (454-469aa HHIHWYWQLEEEECANE).

Form/Appearance

Lyophilized

Concentration

Adding 0.2 ml of distilled water will yield a concentration of 500 µg/ml.

Storage

Store at -20°C for one year from date of receipt. After reconstitution, at 4°C for one month. It can also be aliquotted and stored frozen at -20°C for six months. Avoid repeated freeze-thaw cycles.

Note

For research use only

Application notes

WB: The detection limit for KDR is approximately 5ng/lane under reducing conditions. Tested Species: In-house tested species with positive results. Predicted Species: Species predicted to be fit for the product based on sequence similarities. By Heat: Boiling the paraffin sections in 10mM citrate buffer, pH6.0, for 20mins is required for the staining of formalin/paraffin sections. Other applications have not been tested. Optimal dilutions should be determined by end users. . Add 0.2ml of distilled water will yield a concentration of 500ug/ml.

Isotype

Rabbit IgG

Clonality

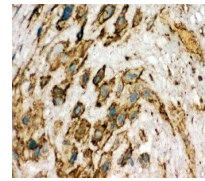
Polyclonal

MW

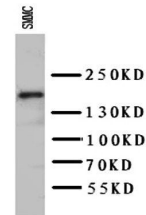
151527 MW

Uniprot ID
P35968
Expiration Date

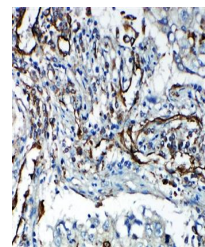
12 months from date of receipt.



Immunohistochemical analysis of formalin...



Western blot analysis of SMMC Cell Lysat...



Immunohistochemical analysis of formalin...