

---

## Product Datasheet

### TORC1/CRTC1 Antibody (orb137866)

**Description**

TORC1/CRTC1 Antibody

**Species/Host**

Rabbit

**Reactivity**

Human, Rat

**Conjugation**

Unconjugated

**Tested**

WB

**Applications**
**Immunogen**

A synthetic peptide corresponding to a sequence at the C-terminus of human TORC1 (506-521aa EQQMAARQANALSHQL), different from the related rat and mouse sequences by two amino acids.

**Form/Appearance**

Lyophilized

**Concentration**

Adding 0.2 ml of distilled water will yield a concentration of 500 µg/ml.

**Storage**

Store at -20°C for one year from date of receipt. After reconstitution, at 4°C for one month. It can also be aliquotted and stored frozen at -20°C for six months. Avoid repeated freeze-thaw cycles.

**Note**

For research use only

**Application notes**

WB: The detection limit for CRTC1 is approximately 1ng/lane under reducing conditions. Tested Species: In-house tested species with positive results. Predicted Species: Species predicted to be fit for the product based on sequence similarities. Other applications have not been tested. Optimal dilutions should be determined by end users. . Add 0.2ml of distilled water will yield a concentration of 500ug/ml.

**Isotype**

Rabbit IgG

**Clonality**

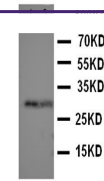
Polyclonal

**MW**

67300 MW

**Uniprot ID**
**Q6UUV9**
**Expiration Date**

12 months from date of receipt.



Western blot analysis of  
Lane 1:  
Recombi...