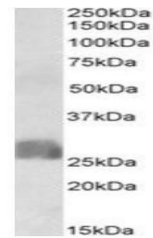


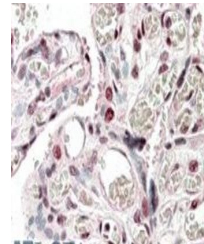
## Product Datasheet

### CREB3L2 antibody (orb137171)

<b>Description</b>	Goat polyclonal to CREB3L2
<b>Species/Host</b>	Goat
<b>Reactivity</b>	Human
<b>Conjugation</b>	Unconjugated
<b>Tested Applications</b>	ELISA, IHC, WB
<b>Target</b>	CREB3L2
<b>Preservatives</b>	Supplied at 0.5 mg/ml in Tris saline, 0.02% sodium azide, pH 7.3 with 0.5% bovine serum albumin. Aliquot and store at -20°C. Minimize freezing and thawing.
<b>Storage</b>	Aliquot and store at -20°C. Minimize freezing and thawing.
<b>Note</b>	For research use only
<b>Application notes</b>	WB: Approx 26kDa band observed in Human Placenta lysates (calculated MW of 27.7kDa according to NP_001240704.1). Recommended concentration: 1-3µg/ml.. IHC: In paraffin embedded Human Placenta shows staining in select nuclei. Recommended concentration, 5-10µg/ml.
<b>Protein Sequence</b>	DRKLSESEPGDGE
<b>Clonality</b>	Polyclonal
<b>MW</b>	57.4; 27.7
<b>Entrez</b>	<a href="#">64764</a>
<b>Dilution Range</b>	ELISA: 1:128000, WB: 1-3 µg/ml, IHC-P: 5-10µg/ml
<b>Expiration Date</b>	12 months from date of receipt.



Western blot analysis of Human Placenta ...



Immunohistochemical staining of Human Pl...