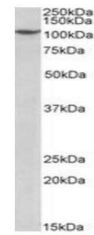


Product Datasheet

PRPF6 antibody (orb137170)

Description	Goat polyclonal to PRPF6
Species/Host	Goat
Reactivity	Bovine, Canine, Human, Mouse, Rat
Conjugation	Unconjugated
Tested Applications	ELISA, WB
Target	PRPF6
Preservatives	Supplied at 0.5 mg/ml in Tris saline, 0.02% sodium azide, pH 7.3 with 0.5% bovine serum albumin. Aliquot and store at -20°C. Minimize freezing and thawing.
Storage	Aliquot and store at -20°C. Minimize freezing and thawing.
Note	For research use only
Application notes	WB: Approx 110kDa band observed in nuclear lysates of cell line Jurkat (calculated MW of 107kDa according to NP_036601.2). Recommended concentration: 1-3µg/ml.
Protein Sequence	TGENHTSVDPRQTQ
Clonality	Polyclonal
MW	107
Entrez	24148
Dilution Range	ELISA: 1:16000, WB: 1-3 µg/ml
Expiration Date	12 months from date of receipt.



Western blot analysis of Jurkat nuclear

...