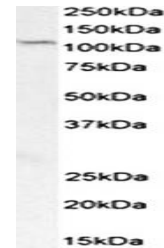


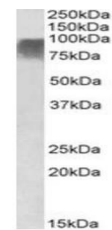
## Product Datasheet

### Prdm9 antibody (orb137111)

<b>Description</b>	Goat polyclonal to Prdm9
<b>Species/Host</b>	Goat
<b>Reactivity</b>	Rat
<b>Conjugation</b>	Unconjugated
<b>Tested Applications</b>	ELISA, WB
<b>Target</b>	Prdm9 (rat aa440-451)
<b>Preservatives</b>	Supplied at 0.5 mg/ml in Tris saline, 0.02% sodium azide, pH 7.3 with 0.5% bovine serum albumin. Aliquot and store at -20°C. Minimize freezing and thawing.
<b>Concentration</b>	0.5-1.5 µg/ml.
<b>Storage</b>	Aliquot and store at -20°C. Minimize freezing and thawing.
<b>Note</b>	For research use only
<b>Application notes</b>	WB: Approx 90kDa band observed in Rat Ovary lysates (calculated MW of 92.6kDa according to NP_001102373.2). Recommended concentration: 2-3µg/ml.
<b>Protein Sequence</b>	QEHFDSQNKNDK
<b>Clonality</b>	Polyclonal
<b>MW</b>	92.6
<b>Dilution Range</b>	ELISA: 1:128000, WB: 2-3 µg/ml
<b>Expiration Date</b>	12 months from date of receipt.



Western blot analysis of Rat Spleen lysa...



Western blot analysis of Rat Ovary lysat...