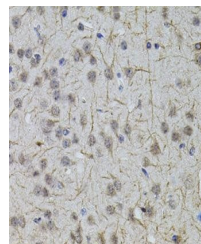


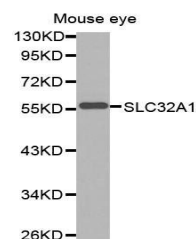
Product Datasheet

SLC32A1 antibody (orb137050)

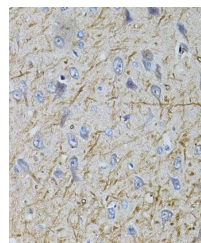
| | |
|----------------------------|---|
| Description | Rabbit polyclonal to SLC32A1 |
| Reactivity | Human, Mouse, Rat |
| Conjugation | Unconjugated |
| Tested Applications | WB |
| Immunogen | Recombinant fusion protein of human SLC32A1(Q9H598). |
| Preservatives | PBS with 0.02% sodium azide,50% glycerol,pH7.3. |
| Storage | Maintain refrigerated at 2-8°C for up to 2 weeks. For long term storage store at -20°C in small aliquots to prevent freeze-thaw cycles. |
| Note | For research use only |
| Isotype | IgG |
| Clonality | Polyclonal |
| MW | 53kDa |
| Uniprot ID | Q9H598 |
| Dilution Range | WB: 1:1000-2000, IHC-P: 1:50-100 |
| Expiration Date | 12 months from date of receipt. |



Immunohistochemical staining of rat brain...



Western blot analysis of extracts of mouse...



Immunohistochemical staining of mouse brain...