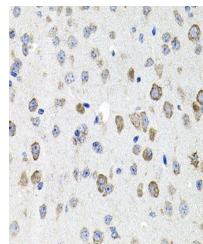


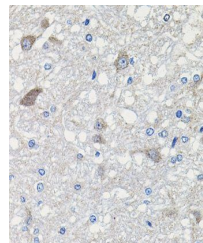
Product Datasheet

CDH23 antibody (orb136976)

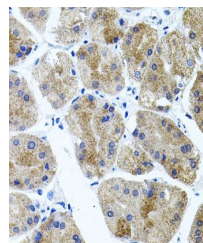
| | |
|----------------------------|---|
| Description | Rabbit polyclonal antibody to CDH23 |
| Species/Host | Rabbit |
| Reactivity | Human, Mouse, Rat |
| Conjugation | Unconjugated |
| Tested Applications | IHC, WB |
| Immunogen | Recombinant protein of human CDH23 |
| Preservatives | Buffer: PBS with 0.02% sodium azide,50% glycerol,pH7.3. |
| Concentration | 1 mg/ml |
| Storage | Maintain refrigerated at 2-8°C for up to 2 weeks. For long term storage store at -20°C in small aliquots to prevent freeze-thaw cycles. |
| Note | For research use only |
| Isotype | IgG |
| Clonality | Polyclonal |
| Purity | Affinity purification |
| Uniprot ID | Q9H251 |
| Entrez | 64072 |
| Dilution Range | WB: 1:500-2000, IHC-P: 1:100-200 |
| Expiration Date | 12 months from date of receipt. |



Immunohistochemistry of paraffin-embedde...



Immunohistochemistry of paraffin-embedde...



Immunohistochemistry of paraffin-embedde...