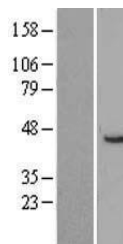


Product Datasheet

Squalene Epoxidase (SQLE) Human Over-expression Lysate (orb1365687)

| | |
|------------------------|--|
| Description | SQLE HEK293T cell transient overexpression lysate (as WB positive control) |
| Target | SQLE |
| Note | For research use only |
| Uniprot ID | Q5HYI4, Q14534 |
| Expiration Date | 6 months from date of receipt. |



Western blot validation of Left: Cell ly...