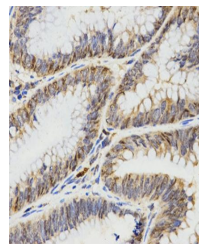


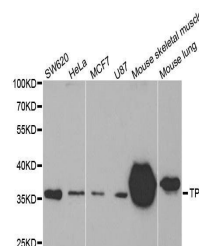
Product Datasheet

TPM2 antibody (orb136441)

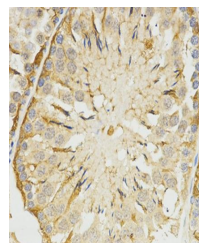
Description	Rabbit polyclonal antibody to TPM2
Reactivity	Human, Mouse, Rat
Conjugation	Unconjugated
Tested Applications	ICC, IF, IHC, IP, WB
Immunogen	A synthetic peptide of human TPM2(P07951).
Preservatives	PBS with 0.01% thiomersal,50% glycerol,pH7.3.
Concentration	1 mg/ml
Storage	Maintain refrigerated at 2-8°C for up to 2 weeks. For long term storage store at -20°C in small aliquots to prevent freeze-thaw cycles.
Note	For research use only
Isotype	IgG
Clonality	Polyclonal
MW	36kDa
Uniprot ID	P07951
Dilution Range	WB: 1:500-1000, IHC-P: 1:50-100
Expiration Date	12 months from date of receipt.



Immunohistochemical analysis of formalin...



Western blot analysis of extracts of var...



IHC-P image of rat testis tissue using T...