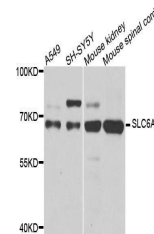


## Product Datasheet

### SLC6A2 antibody (orb136313)

<b>Description</b>	Rabbit polyclonal to SLC6A2
<b>Species/Host</b>	Rabbit
<b>Reactivity</b>	Human, Mouse, Rat
<b>Conjugation</b>	Unconjugated
<b>Tested Applications</b>	WB
<b>Immunogen</b>	Recombinant fusion protein of human SLC6A2 (NP_001165975.1).
<b>Preservatives</b>	Buffer: PBS with 0.02% sodium azide, 50% glycerol, pH7.3.
<b>Storage</b>	Store at -20°C. Avoid freeze / thaw cycles.
<b>Note</b>	For research use only
<b>Isotype</b>	IgG
<b>Clonality</b>	Polyclonal
<b>Purity</b>	Affinity purification
<b>MW</b>	69kDa
<b>Uniprot ID</b>	<b>P23975</b>
<b>Entrez</b>	<b>6530</b>
<b>Dilution Range</b>	WB: 1:500-2000
<b>Expiration Date</b>	12 months from date of receipt.



Western blot analysis of extracts of var...