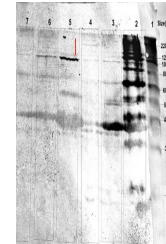


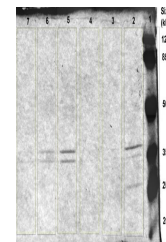
Product Datasheet

ompF antibody (orb13626)

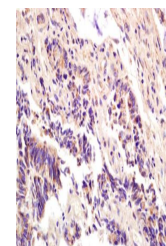
| | |
|----------------------------|---|
| Description | ompF antibody |
| Species/Host | Rabbit |
| Reactivity | Bacteria |
| Conjugation | Unconjugated |
| Tested Applications | ELISA, IHC-P, WB |
| Immunogen | KLH conjugated synthetic peptide derived from human ompF. Please contact us for the exact immunogen sequence. The peptide is available as orb73071. |
| Target | ompF |
| Form/Appearance | 10 mM PBS, 0.02% sodium azide |
| Concentration | - 100 µg (in 200 µl): 0.5 mg/ml- 200 µg (in 400 µl): 0.5 mg/ml |
| Storage | Store at 4°C for up to two weeks. For long term storage, aliquot and store at -20°C, avoid freeze/thaw cycles. |
| Note | For research use only |
| Isotype | IgG |
| Clonality | Polyclonal |
| Purity | Polyclonal antibodies are purified by peptide affinity chromatography |
| MW | 42 kDa |
| NCBI | 001005857, 123441874 |
| Dilution Range | P-ELISA: 1:500-1000, WB: 1:100-500, IHC-P: 1:100-500 (based on 0.5 mg/ml) |
| Expiration Date | 12 months from date of receipt. |



10% SDS-PAGE followed by a Western blot...



3&4, wild type(BW 25113) + kanamycin (0...



6&7, ΔOmpF (JW0912) + kanamycin (0xMIC,...