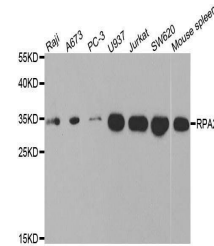


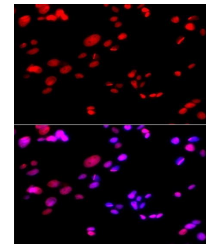
Product Datasheet

RPA2 antibody (orb136254)

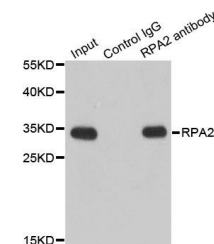
Description	Rabbit polyclonal antibody to RPA2
Reactivity	Human, Mouse, Rat
Conjugation	Unconjugated
Tested Applications	ChIP, IHC, IP, WB
Immunogen	Recombinant fusion protein of human RPA2(NP_002937.1).
Preservatives	PBS with 0.02% sodium azide, 50% glycerol, pH7.3.
Concentration	1 mg/ml
Storage	Maintain refrigerated at 2-8°C for up to 2 weeks. For long term storage store at -20°C in small aliquots to prevent freeze-thaw cycles.
Note	For research use only
Isotype	IgG
Clonality	Polyclonal
MW	32kDa
Uniprot ID	P15927
Dilution Range	WB: 1:500-2000, IHC-P: 1:50-200, IF/ICC: 1:50-200
Expiration Date	12 months from date of receipt.



Western blot analysis of extracts of var...



Immunofluorescence analysis of U2OS cell...



Immunoprecipitation analysis of 200ug ex...