

Product Datasheet

CD303 antibody (orb13622)

Description

CD303 antibody

Species/Host

Rabbit

Reactivity

Human, Mouse, Porcine, Rat

Conjugation

Unconjugated

Tested Applications

ELISA, ICC, IF, IHC-P, WB

Immunogen

KLH conjugated synthetic peptide derived from human CD303. Please contact us for the exact immunogen sequence. The peptide is available as orb374772.

Target

CD303

Form/Appearance

10 mM PBS, 0.02% sodium azide

Concentration

- 100 µg (in 200 µl): 0.5 mg/ml- 200 µg (in 400 µl): 0.5 mg/ml

Storage

Store at 4°C for up to two weeks. For long term storage, aliquot and store at -20°C, avoid freeze/thaw cycles.

Note

For research use only

Application notes

This antibody against Human, Mouse, Pig.

Isotype

IgG

Clonality

Polyclonal

Purity

Polyclonal antibodies are purified by peptide affinity chromatography

MW

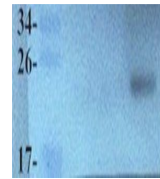
25 kDa

Uniprot ID
[Q8WTT0](#)
NCBI
[569708](#), [21](#), [130441](#), [11](#)
Entrez
[170482](#)
Dilution Range

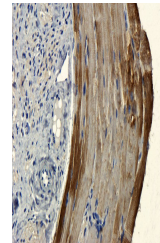
WB: 1-2µg/ml, IF/ICC: 1:100, IHC-P: 1:200 (based on 0.5 mg/ml)

Expiration Date

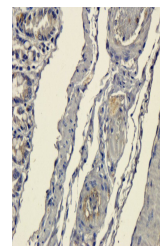
12 months from date of receipt.



Western blot analysis of Rat small intes...



IHC-P image of mouse lymph gland tissue ...



IHC-P staining of pig small intestine ti...