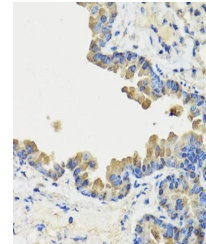


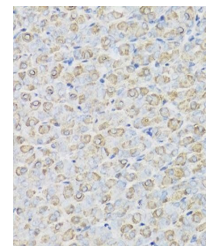
## Product Datasheet

### REG3A antibody (orb136041)

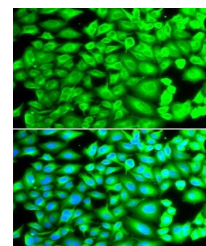
<b>Description</b>	Rabbit polyclonal antibody to REG3A
<b>Species/Host</b>	Rabbit
<b>Reactivity</b>	Human, Mouse, Rat
<b>Conjugation</b>	Unconjugated
<b>Tested Applications</b>	WB
<b>Immunogen</b>	Recombinant fusion protein of human REG3A (NP_002571.1).
<b>Preservatives</b>	Buffer: PBS with 0.02% sodium azide, 50% glycerol, pH7.3.
<b>Concentration</b>	1 mg/ml
<b>Storage</b>	Store at -20°C. Avoid freeze / thaw cycles.
<b>Note</b>	For research use only
<b>Isotype</b>	IgG
<b>Clonality</b>	Polyclonal
<b>Purity</b>	Affinity purification
<b>MW</b>	15kDa
<b>Uniprot ID</b>	<a href="#">Q06141</a>
<b>Entrez</b>	<a href="#">5068</a>
<b>Dilution Range</b>	WB: 1:500-2000, IHC-P: 1:50-100, IF/ICC: 1:50-200
<b>Expiration Date</b>	12 months from date of receipt.



Immunohistochemical staining of mouse st...



Immunohistochemical staining of mouse br...



Immunofluorescence analysis of MCF-7 cel...