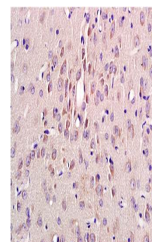


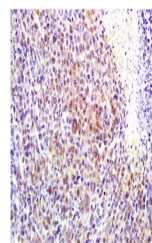
Product Datasheet

MSH alpha antibody (orb13589)

Description	MSH alpha antibody
Species/Host	Rabbit
Reactivity	Mouse
Conjugation	Unconjugated
Tested Applications	IHC-P
Immunogen	KLH conjugated synthetic peptide derived from human ACTH (138-150/267 aa)
Target	alpha MSH
Preservatives	0.01M TBS(pH7.4) with 1% rAlbumin, 0.03% Proclin300 and 50% Glycerol.
Form/Appearance	Liquid
Concentration	1mg/ml
Storage	Shipped at 4°C. Store at -20 °C for one year. Avoid repeated freeze/thaw cycles.
Note	For research use only
Isotype	IgG
Clonality	Polyclonal
MW	1.4 kDa
Uniprot ID	P01189
Dilution Range	IHC-P=1:100-500, WB=1:500-2000, ELISA=1:5000-10000
Expiration Date	12 months from date of receipt.



Paraffin-embedded rat brain tissue fixed...



Paraffin-embedded mouse lymphoma tissue ...