

---

## Product Datasheet

### MMP9 antibody (orb13583)

**Description**

MMP9 antibody

**Species/Host**

Rabbit

**Reactivity**

Bovine, Canine, Equine, Guinea pig, Human, Mouse, Porcine, Rat

**Conjugation**

Unconjugated

**Tested Applications**

ELISA, ICC, IF, IHC-P, WB

**Immunogen**

KLH conjugated synthetic peptide derived from human MMP9. Please contact us for the exact immunogen sequence. The peptide is available as orb374791.

**Target**

MMP9

**Form/Appearance**

10 mM PBS, 0.02% sodium azide

**Concentration**

- 100 µg (in 200 µl): 0.5 mg/ml- 200 µg (in 400 µl): 0.5 mg/ml

**Storage**

Store at 4°C for up to two weeks. For long term storage, aliquot and store at -20°C, avoid freeze/thaw cycles.

**Note**

For research use only

**Isotype**

IgG

**Clonality**

Polyclonal

**Purity**

Polyclonal antibodies are purified by peptide affinity chromatography

**MW**

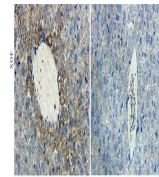
78 kDa

**Uniprot ID**
[P14780](#), [P41245](#)
**NCBI**
[004994](#), [21](#), [004985](#)
**Entrez**
[4318](#)
**Dilution Range**

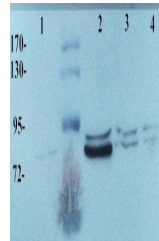
WB: 2 µg/ml, IHC-P:1:200, IF/ICC: 1:200

**Expiration Date**

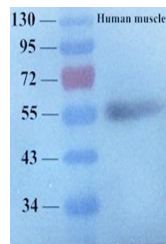
12 months from date of receipt.

IHC-P staining of mouse liver tissue usi...



WB analysis of Mouse spleen (Lane 1), Ra...



Western blot analysis of human muscle ti...