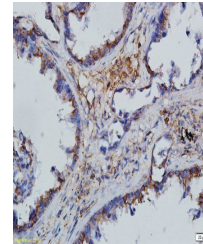


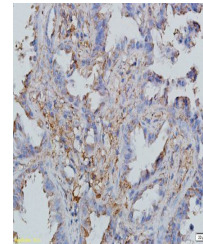
Product Datasheet

CCL10 antibody (orb13568)

Description	CCL10 antibody
Species/Host	Rabbit
Reactivity	Mouse
Conjugation	Unconjugated
Tested Applications	IF, IHC-P
Immunogen	KLH conjugated synthetic peptide derived from mouse CCL9 (22-122/122 aa)
Target	Macrophage Inflammatory Protein 1 gamma
Preservatives	0.01M TBS(pH7.4) with 1% rAlbumin, 0.03% Proclin300 and 50% Glycerol.
Form/Appearance	Liquid
Concentration	1mg/ml
Storage	Shipped at 4°C. Store at -20 °C for one year. Avoid repeated freeze/thaw cycles.
Note	For research use only
Isotype	IgG
Clonality	Polyclonal
MW	13 kDa
Uniprot ID	Q5FVN3
Dilution Range	IHC-P=1:100-500, IF=1:100-500, IHC-F=1:100-500, ELISA=1:5000-10000
Expiration Date	12 months from date of receipt.



Immunohistochemical staining of paraffin...



IHC of human endometrial cancer tissue (...)