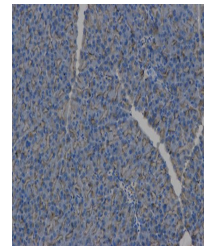


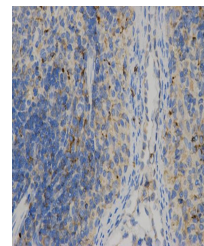
Product Datasheet

HLA-DPB1 antibody (orb135654)

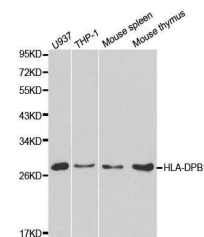
Description	Rabbit polyclonal antibody to HLA-DPB1
Reactivity	Human, Mouse
Conjugation	Unconjugated
Tested Applications	IHC, WB
Immunogen	Recombinant fusion protein of human HLA-DPB1(NP_002112.3).
Preservatives	PBS with 0.02% sodium azide,50% glycerol,pH7.3.
Concentration	1 mg/ml
Storage	Maintain refrigerated at 2-8°C for up to 2 weeks. For long term storage store at -20°C in small aliquots to prevent freeze-thaw cycles.
Note	For research use only
Isotype	IgG
Clonality	Polyclonal
MW	25-35KDa
Uniprot ID	P04440
Dilution Range	WB: 1:500-2000, IHC-P: 1:50-100
Expiration Date	12 months from date of receipt.



IHC-P staining of human brain cancer tis...



Immunohistochemical analysis of formalin...



WB analysis of extracts of various cell ...