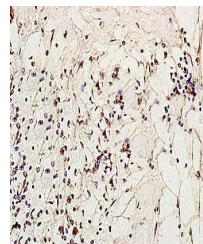


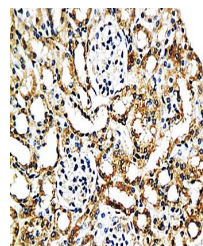
Product Datasheet

MCP2/CCL8 antibody (orb13564)

Description	MCP2/CCL8 antibody
Species/Host	Rabbit
Conjugation	Unconjugated
Tested Applications	ELISA, IF, IHC-Fr, IHC-P
Immunogen	KLH conjugated synthetic peptide derived from human MCP-2 (24-99/99 aa)
Target	MCP-2
Preservatives	0.01M TBS(pH7.4) with 1% rAlbumin, 0.03% Proclin300 and 50% Glycerol.
Form/Appearance	Liquid
Concentration	1mg/ml
Storage	Shipped at 4°C. Store at -20 °C for one year. Avoid repeated freeze/thaw cycles.
Note	For research use only
Isotype	IgG
Clonality	Polyclonal
MW	8/9 kDa
Uniprot ID	Q9Z121
Expiration Date	12 months from date of receipt.



Immunohistochemical analysis of formalin...



IHC-P of mouse kidney tissue (Dilution a...