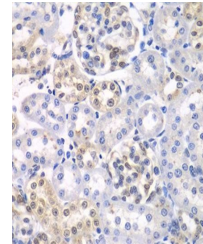


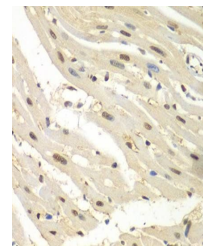
Product Datasheet

HDAC2 antibody (orb135636)

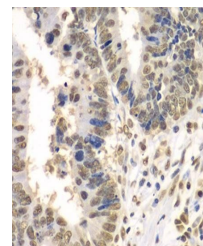
Description	Rabbit polyclonal antibody to HDAC2
Reactivity	Human, Mouse, Rat
Conjugation	Unconjugated
Tested Applications	IHC, IP, WB
Immunogen	A synthetic peptide of human HDAC2(NP_001518.3).
Preservatives	PBS with 0.02% sodium azide,50% glycerol,pH7.3.
Concentration	1 mg/ml
Storage	Store at -20°C. Avoid freeze / thaw cycles.
Note	For research use only
Isotype	IgG
Clonality	Polyclonal
MW	60kDa
Uniprot ID	Q92769
Dilution Range	WB: 1:500-2000, IHC-P: 1:50-200, IF/ICC: 1:20-50
Expiration Date	12 months from date of receipt.



Immunohistochemical staining of human lu...



Immunohistochemical staining of human li...



Immunohistochemical staining of human co...