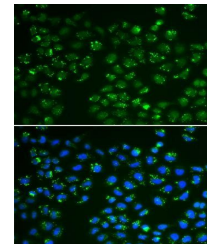


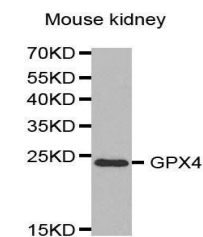
Product Datasheet

GPX4 antibody (orb135590)

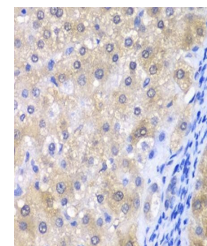
Description	Rabbit polyclonal antibody to GPX4
Reactivity	Human, Mouse, Rat
Conjugation	Unconjugated
Tested Applications	ICC, IF, WB
Immunogen	Recombinant fusion protein of human GPX4(NP_002076.2).
Preservatives	PBS with 0.05% proclin300,50% glycerol,pH7.3.
Concentration	1 mg/ml
Storage	Maintain refrigerated at 2-8°C for up to 2 weeks. For long term storage store at -20°C in small aliquots to prevent freeze-thaw cycles.
Note	For research use only
Isotype	IgG
Clonality	Polyclonal
MW	22KDa
Uniprot ID	P36969
Dilution Range	WB: 1:500-2000, IHC-P: 1:50-200, IF/ICC: 1:10-100
Expiration Date	12 months from date of receipt.



Immunofluorescence analysis of A549 cell...



Western blot analysis of extracts of mou...



Immunohistochemical staining of human li...