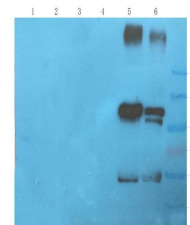


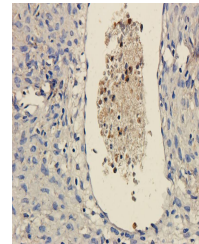
Product Datasheet

CD11c antibody (orb13554)

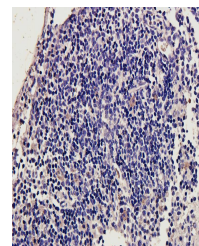
Description	CD11c antibody
Species/Host	Rabbit
Reactivity	Guinea pig, Human, Mouse, Rat
Conjugation	Unconjugated
Tested Applications	ICC, IF, IHC-P, WB
Immunogen	KLH conjugated synthetic peptide derived from human CD11c. Please contact us for the exact immunogen sequence. The peptide is available as orb12913.
Target	CD11c
Form/Appearance	10 mM PBS, 0.02% sodium azide
Concentration	- 100 µg (in 200 µl): 0.5 mg/ml- 200 µg (in 400 µl): 0.5 mg/ml
Storage	Store at 4°C for up to two weeks. For long term storage, aliquot and store at -20°C, avoid freeze/thaw cycles.
Note	For research use only
Isotype	IgG
Clonality	Polyclonal
Purity	Polyclonal antibodies are purified by peptide affinity chromatography
MW	127 kDa
Uniprot ID	Q9QXH4 , P20702
Entrez	3687
Dilution Range	IHC-P: 1: 100-600
Expiration Date	12 months from date of receipt.



Western blot analysis of rat lymph node ...



IHC-P staining of human ovarian cancer t...



Immunohistochemical staining of paraffin...