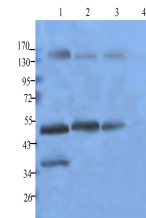


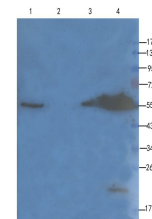
Product Datasheet

Ly-6G antibody (orb13552)

Description	Ly-6G antibody
Species/Host	Rabbit
Conjugation	Unconjugated
Tested Applications	WB
Immunogen	KLH conjugated synthetic peptide derived from human Ly-6G. Please contact us for the exact immunogen sequence. The peptide is available as orb374770.
Target	Ly-6G
Form/Appearance	10 mM PBS, 0.02% sodium azide
Concentration	- 100 µg (in 200 µl): 0.5 mg/ml- 200 µg (in 400 µl): 0.5 mg/ml
Storage	Store at 4°C for up to two weeks. For long term storage, aliquot and store at -20°C, avoid freeze/thaw cycles.
Note	For research use only
Isotype	IgG
Clonality	Polyclonal
Purity	Polyclonal antibodies are purified by peptide affinity chromatography
MW	25 kDa
Uniprot ID	P35461
NCBI	081642 , 027366 , 11
Entrez	546644
Dilution Range	WB: 1:100-1000 (based on 0.5 mg/ml)
Expiration Date	12 months from date of receipt.



WB analysis of mouse brain (lane 1), mouse uterus (lane 2), and mouse spleen (lanes 3 and 4).



Western blot analysis of rat uterus (lanes 1 and 2) and rat spleen (lanes 3 and 4).