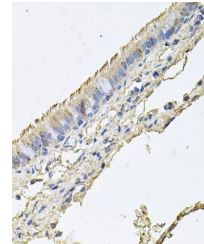


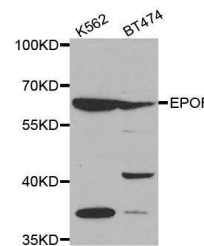
Product Datasheet

EPOR antibody (orb135464)

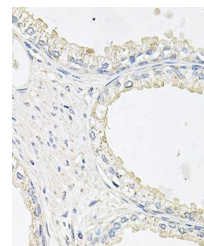
Description	Rabbit polyclonal antibody to EPOR
Reactivity	Human, Mouse, Rat
Conjugation	Unconjugated
Tested Applications	ICC, IF, WB
Immunogen	A synthetic peptide of human EPOR(NP_000112.1).
Preservatives	PBS with 0.05% proclin300,50% glycerol,pH7.3.
Concentration	1 mg/ml
Storage	Store at -20°C. Avoid freeze / thaw cycles.
Note	For research use only
Isotype	IgG
Clonality	Polyclonal
MW	60KDa
Uniprot ID	P19235
Dilution Range	WB: 1:500-2000, IHC-P: 1:50-200
Expiration Date	12 months from date of receipt.



Immunohistochemical staining of human tr...



Western blot analysis of extracts of var...



Immunohistochemical staining of human pr...