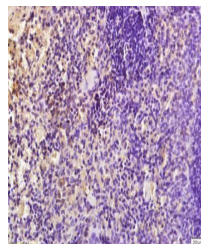


Product Datasheet

JAK2 (phospho-Tyr1007/1008) antibody (orb13521)

Description	JAK2 (phospho-Tyr1007/1008) antibody
Species/Host	Rabbit
Reactivity	Human, Mouse, Rat, Zebrafish
Conjugation	Unconjugated
Tested Applications	FC, ICC, IHC-P
Immunogen	KLH conjugated Synthesised phosphopeptide derived from human JAK2 around the phosphorylation site of Tyr1007/1008 (KE(p-Y)(p-Y)KV)
Target	phospho-JAK2 (Tyr1007+Tyr1008)
Preservatives	0.01M TBS(pH7.4) with 1% rAlbumin, 0.03% Proclin300 and 50% Glycerol.
Form/Appearance	Liquid
Concentration	1mg/ml
Storage	Shipped at 4°C. Store at -20 °C for one year. Avoid repeated freeze/thaw cycles.
Note	For research use only
Isotype	IgG
Clonality	Polyclonal
MW	131 kDa
Uniprot ID	O60674
Dilution Range	IHC-P=1:100-500, ICC=1:100, Flow-Cyt=1µg/Test, IHC-F=1:100-500, IF=1:100-500, ELISA=1:5000-10000
Expiration Date	12 months from date of receipt.



Immunohistochemical staining of rat sple...