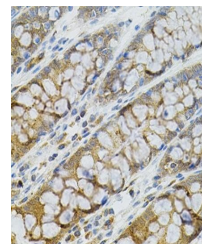


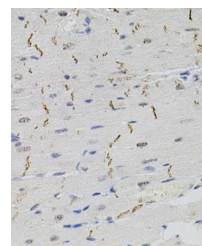
Product Datasheet

BCL2 antibody (orb135113)

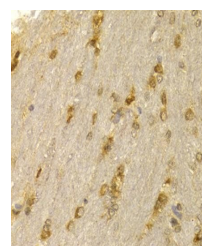
Description	Rabbit polyclonal antibody to BCL2
Reactivity	Human, Mouse, Rat
Conjugation	Unconjugated
Tested Applications	ICC, IF, IP, WB
Immunogen	Recombinant fusion protein of human Bcl-2(P10415).
Preservatives	PBS with 0.01% thiomersal,50% glycerol,pH7.3.
Concentration	1 mg/ml
Storage	Maintain refrigerated at 2-8°C for up to 2 weeks. For long term storage store at -20°C in small aliquots to prevent freeze-thaw cycles.
Note	For research use only
Isotype	IgG
Clonality	Polyclonal
MW	26KDa
Uniprot ID	P10415
Dilution Range	WB: 1:500-1000, IHC-P: 1:50-100, IF/ICC: 1:50-100
Expiration Date	12 months from date of receipt.



Immunohistochemical staining of rat brain...



Immunohistochemical staining of human co...



Immunohistochemical staining of rat hear...