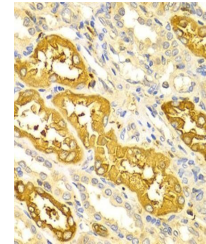


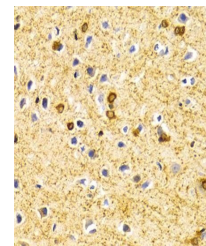
Product Datasheet

BIN1 antibody (orb135048)

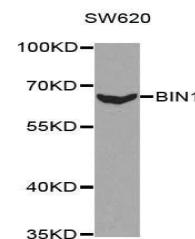
| | |
|----------------------------|---|
| Description | Rabbit polyclonal antibody to BIN1 |
| Reactivity | Human, Rat |
| Conjugation | Unconjugated |
| Tested Applications | ICC, IF, IHC, WB |
| Immunogen | Recombinant fusion protein of human BIN1(NP_647601.1). |
| Preservatives | PBS with 0.02% sodium azide,50% glycerol,pH7.3. |
| Concentration | 1 mg/ml |
| Storage | Maintain refrigerated at 2-8°C for up to 2 weeks. For long term storage store at -20°C in small aliquots to prevent freeze-thaw cycles. |
| Note | For research use only |
| Isotype | IgG |
| Clonality | Polyclonal |
| MW | 65kDa |
| Uniprot ID | O00499 |
| Dilution Range | WB: 1:500-2000, IHC-P: 1:50-200, IF/ICC: 1:20-50 |
| Expiration Date | 12 months from date of receipt. |



Immunohistochemical staining of human kidney tissue.



Immunohistochemical staining of rat brain tissue.



Western blot analysis of extracts of SW620 cells.