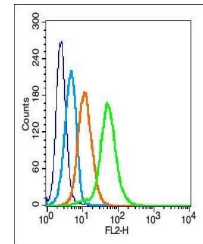


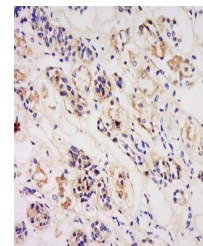
Product Datasheet

IL3 alpha Receptor antibody (orb13503)

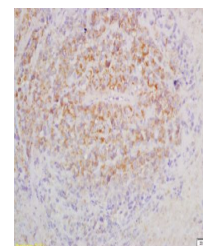
Description	IL3 alpha Receptor antibody
Species/Host	Rabbit
Reactivity	Human, Mouse
Conjugation	Unconjugated
Tested Applications	FC
Immunogen	KLH conjugated synthetic peptide derived from human IL-3R alpha (201-300/378 aa)
Target	IL3RA
Preservatives	0.01M TBS(pH7.4) with 1% rAlbumin, 0.03% Proclin300 and 50% Glycerol.
Form/Appearance	Liquid
Concentration	1mg/ml
Storage	Shipped at 4°C. Store at -20 °C for one year. Avoid repeated freeze/thaw cycles.
Note	For research use only
Isotype	IgG
Clonality	Polyclonal
MW	40 kDa
Uniprot ID	P26951
Dilution Range	Flow-Cyt=1µg /test, IHC-P=1:100-500, IHC-F=1:100-500, IF=1:100-500, ELISA=1:5000-10000
Expiration Date	12 months from date of receipt.



Flow cytometric analysis of U937 cell (b...



Immunohistochemical staining of human ki...



Immunohistochemical staining of mouse ly...