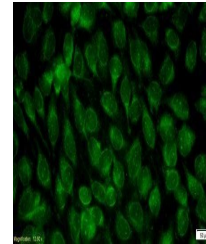


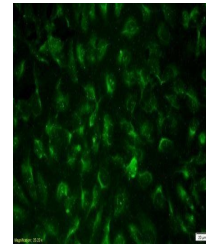
Product Datasheet

IL15RA antibody (orb13495)

| | |
|----------------------------|--|
| Description | IL15RA antibody |
| Species/Host | Rabbit |
| Reactivity | Human, Rat |
| Conjugation | Unconjugated |
| Tested Applications | IHC-P |
| Immunogen | KLH conjugated synthetic peptide derived from human IL-15RA (51-150/267 aa) |
| Target | IL15RA |
| Preservatives | 0.01M TBS(pH7.4) with 1% rAlbumin, 0.03% Proclin300 and 50% Glycerol. |
| Form/Appearance | Liquid |
| Concentration | 1mg/ml |
| Storage | Shipped at 4°C. Store at -20 °C for one year. Avoid repeated freeze/thaw cycles. |
| Note | For research use only |
| Isotype | IgG |
| Clonality | Polyclonal |
| MW | 25 kDa |
| Uniprot ID | Q13261 |
| Dilution Range | IHC-P=1:100-500 |
| Expiration Date | 12 months from date of receipt. |



IF of rat blood vessel endothelial cells...



Immunofluorescence analysis of rat blood...