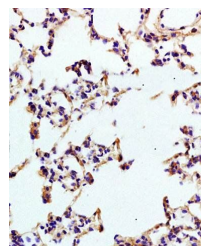


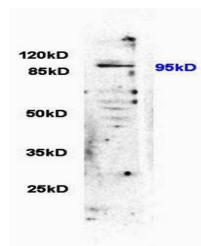
Product Datasheet

IL12RB2 antibody (orb13493)

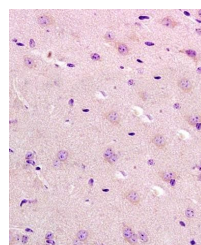
Description	IL12RB2 antibody
Species/Host	Rabbit
Reactivity	Human
Conjugation	Unconjugated
Tested Applications	WB
Immunogen	KLH conjugated synthetic peptide derived from human IL-12RB2 (261-360/862 aa)
Target	IL12RB2
Preservatives	0.01M TBS(pH7.4) with 1% rAlbumin, 0.03% Proclin300 and 50% Glycerol.
Form/Appearance	Liquid
Concentration	1mg/ml
Storage	Shipped at 4°C. Store at -20 °C for one year. Avoid repeated freeze/thaw cycles.
Note	For research use only
Isotype	IgG
Clonality	Polyclonal
MW	95 kDa
Uniprot ID	Q99665
Dilution Range	WB=1:500-2000
Expiration Date	12 months from date of receipt.



IHC-P of mouse brain tissue (beta 2 IL12...



Western blot analysis of rat brain lysat...



Immunohistochemical analysis of formalin...