
Product Datasheet

IL11 antibody (orb13489)

Description

IL11 antibody

Species/Host

Rabbit

Reactivity

Human, Mouse, Rat

Conjugation

Unconjugated

Tested

ELISA, IHC-P, WB

Applications
Immunogen

KLH conjugated synthetic peptide derived from human IL11. Please contact us for the exact immunogen sequence. The peptide is available as orb374767.

Target

IL11. Recognized endogenous levels of total IL11 antibody

Form/Appearance

10 mM PBS, 0.02% sodium azide

Concentration

- 100 µg (in 200 µl): 0.5 mg/ml- 200 µg (in 400 µl): 0.5 mg/ml

Storage

Store at 4°C for up to two weeks. For long term storage, aliquot and store at -20°C, avoid freeze/thaw cycles.

Note

For research use only

Isotype

IgG

Clonality

Polyclonal

Purity

Polyclonal antibodies are purified by peptide affinity chromatography

MW

21 kDa

Uniprot ID
[P20809](#)
NCBI
[000641](#), [000632](#), [31](#), [11](#)
Entrez
[3589](#)
Dilution Range

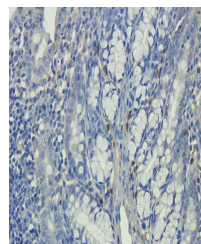
WB: 1:100-2000, IHC-P: 1:100-800 (based on 0.5 mg/ml)

Expiration Date

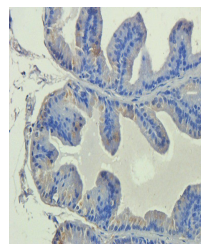
12 months from date of receipt.



Immunohistochemical staining of rat skin...



Immunohistochemical staining of paraffin...



IHC-P staining of rat prostate tissue us...