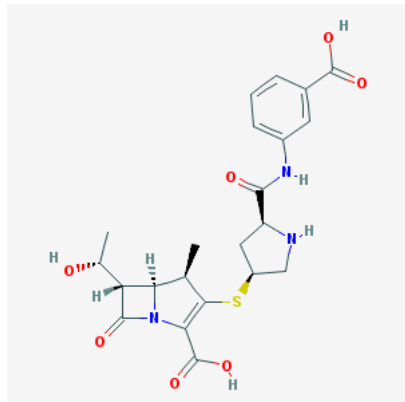


# Product Datasheet

## Ertapenem (orb134782)

<b>Description</b>	Ertapenem is a carbapenem antibiotic marketed by Merck as Invanz.
<b>Note</b>	For research use only
<b>Formula</b>	$C_{22}H_{25}N_3O_7S$
<b>MW</b>	475.52
<b>CAS Number</b>	[153832-46-3]
<b>SMILES</b>	<chem>O=C(C(N12)=C(S[C@@H]3CN[C@H](C(NC4=CC=CC(C(O)=O)=C4)=O)C3)[C@H](C)[C@]2([H])[C@@H]([C@H](O)C)C1=O)O</chem>
<b>Expiration Date</b>	12 months from date of receipt.



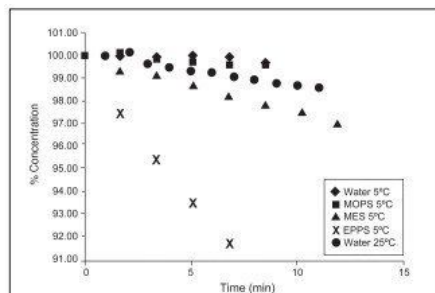
Chemical structure of Ertapenem

**Biorbyt Ltd.**

7 Signet Court, Swann's Road,  
Cambridge, CB5 8LA, United Kingdom  
Email: [info@biorbyt.com](mailto:info@biorbyt.com), [support@biorbyt.com](mailto:support@biorbyt.com)  
Phone: [+44 \(0\) 1223 859-353](tel:+44(0)1223859353) | Fax: [+1 \(415\) 651-8558](tel:+1(415)6518558)

**Biorbyt LLC.**

68 TW Alexander Drive,  
Durham, NC, 27713, United States  
Email: [info@biorbyt.com](mailto:info@biorbyt.com), [support@biorbyt.com](mailto:support@biorbyt.com)  
Phone: [+1 \(415\) 906-5211](tel:+1(415)9065211) | Fax: [+1 \(415\) 651-8558](tel:+1(415)6518558)



**Figure 7.** Stability of ertapenem sodium API at 5°C in various diluents at a diluted concentration of 0.2 g/L. Change of relative area counts versus time for water and three buffers used: MOPS (pH 7), MES (pH 5.5), and EPPS (pH 9.5).

Chemical structure of Invanz (TN)

**Biorbyt Ltd.**

7 Signet Court, Swann's Road,  
Cambridge, CB5 8LA, United Kingdom  
Email: [info@biorbyt.com](mailto:info@biorbyt.com), [support@biorbyt.com](mailto:support@biorbyt.com)  
Phone: [+44 \(0\) 1223 859-353](tel:+44(0)1223859353) | Fax: [+1 \(415\) 651-8558](tel:+1(415)6518558)

**Biorbyt LLC.**

68 TW Alexander Drive,  
Durham, NC, 27713, United States  
Email: [info@biorbyt.com](mailto:info@biorbyt.com), [support@biorbyt.com](mailto:support@biorbyt.com)  
Phone: [+1 \(415\) 906-5211](tel:+1(415)9065211) | Fax: [+1 \(415\) 651-8558](tel:+1(415)6518558)