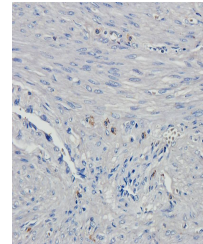


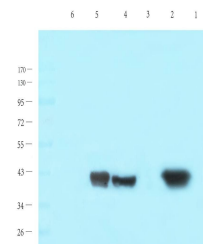
Product Datasheet

HOXA10 antibody (orb13476)

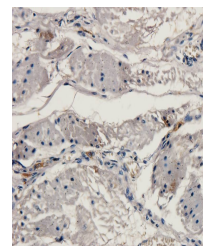
Description	HOXA10 antibody
Species/Host	Rabbit
Conjugation	Unconjugated
Tested Applications	ICC, IF, IHC-P, WB
Immunogen	KLH conjugated synthetic peptide derived from human HOXA10. Please contact us for the exact immunogen sequence. The peptide is available as orb394006.
Target	RB792
Form/Appearance	10 mM PBS, 0.02% sodium azide
Concentration	- 100 µg (in 200 µl): 0.5 mg/ml- 200 µg (in 400 µl): 0.5 mg/ml
Storage	Store at 4°C for up to two weeks. For long term storage, aliquot and store at -20°C, avoid freeze/thaw cycles.
Note	For research use only
Isotype	IgG
Clonality	Polyclonal
Purity	Polyclonal antibodies are purified by peptide affinity chromatography
MW	42 kDa
Uniprot ID	P31260 , P31310
NCBI	31 , 018951 , 061824
Entrez	3206
Dilution Range	IF/ICC: 1:50-400, IHC-P: 1:50-400, WB: 1:200-2000
Expiration Date	12 months from date of receipt.



Immunohistochemical staining of human en...



Western blot analysis of mouse uterus (l...



Immunohistochemical staining of pig uter...