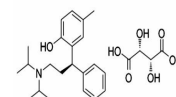


## Product Datasheet

### Tolterodine tartrate (orb134734)

<b>Description</b>	Tolterodine L-Tartrate is a muscarinic receptor antagonist that is active at all mAChR M subtypes. T...
<b>Note</b>	For research use only
<b>Formula</b>	C <sub>26</sub> H <sub>37</sub> NO <sub>7</sub>
<b>MW</b>	475.582
<b>CAS Number</b>	[124937-52-6]
<b>SMILES</b>	<chem>OC1=CC=C(C)C=C1[C@H](CCN(C(C)C)C(C)C)C2=CC=CC=C2.OC(C(O)=O)C(O)C(O)=O</chem>
<b>Expiration Date</b>	12 months from date of receipt.



Chemical structure of Tolterodine tartra...