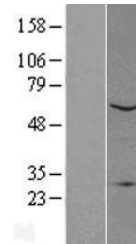


Product Datasheet

PLA2G4C Human Over-expression Lysate (orb1345660)

Description	Transient overexpression lysate of phospholipase A2, group IVC (cytosolic, calcium-independent) (PLA...
Target	PLA2G4C
Storage	The lysate is shipped with dry ice. The lysate is shipped with dry ice. Upon receiving, store the sample at -80°C. Also after dilution, the protein sample should be aliquoted and stored at -80°C for long term storage. Avoid repeated freeze-thaw cycles. Lysate samples can be diluted with 2xSDS Sample Buffer provided. Lysate samples are stable for 12 months from the date of receipt when stored at -80°C.
Tag	C-Myc/DDK
Note	For research use only
Source	Human
MW	60.9 kDa
Uniprot ID	A0A024QZH0 , Q9UP65
Expiration Date	6 months from date of receipt.



Western blot analysis of Left: Cell lysa...