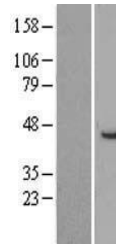


Product Datasheet

Squalene Epoxidase (SQLE) Human Over-expression Lysate (orb1345347)

Description	Transient overexpression lysate of squalene epoxidase (SQLE)
Target	SQLE
Note	For research use only
Uniprot ID	Q5HYI4 , Q14534
Expiration Date	6 months from date of receipt.



Western blot analysis of Left: Cell lysa...