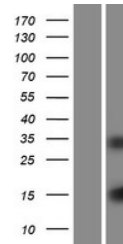


## Product Datasheet

# SCGF (CLEC11A) Human Over-expression Lysate (orb1345273)

<b>Description</b>	Transient overexpression lysate of C-type lectin domain family 11, member A (CLEC11A)
<b>Target</b>	CLEC11A
<b>Note</b>	For research use only
<b>Uniprot ID</b>	<a href="#">Q9Y240</a>
<b>Expiration Date</b>	6 months from date of receipt.



Western blot analysis of  
Left: Cell lysa...