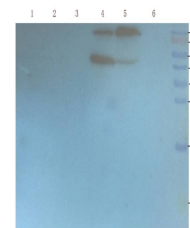


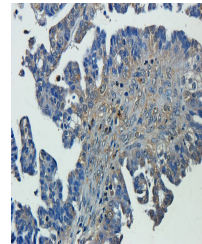
Product Datasheet

CXCL5 antibody (orb13450)

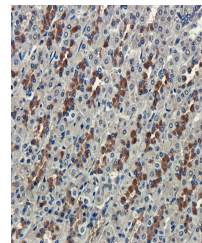
Description	CXCL5 antibody
Species/Host	Rabbit
Conjugation	Unconjugated
Tested Applications	ICC, IF, IHC-P, WB
Immunogen	KLH conjugated synthetic peptide derived from human CXCL5. Please contact us for the exact immunogen sequence. The peptide is available as orb12909.
Target	CXCL5
Form/Appearance	10 mM PBS, 0.02% sodium azide
Concentration	- 100 µg (in 200 µl): 0.5 mg/ml- 200 µg (in 400 µl): 0.5 mg/ml
Storage	Store at 4°C for up to two weeks. For long term storage, aliquot and store at -20°C, avoid freeze/thaw cycles.
Note	For research use only
Isotype	IgG
Clonality	Polyclonal
Purity	Polyclonal antibodies are purified by peptide affinity chromatography
MW	12 kDa
NCBI	002985 , 002994 , 41 , 11
Entrez	20311
Dilution Range	IF/ICC: 1:100-800, IHC-P: 1:100-800, WB: 1:200-1000
Expiration Date	12 months from date of receipt.



WB analysis of mouse stomach (lane 1), r...



Immunohistochemical staining of paraffin...



Immunohistochemical staining of paraffin...