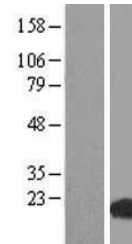


Product Datasheet

WHAMMP3 Human Over-expression Lysate (orb1344070)

Description	Transient overexpression lysate of WAS protein homology region 2 domain containing 1-like 1 (WHDC1L1...
Target	WHDC1L1
Note	For research use only
Expiration Date	6 months from date of receipt.



Western blot analysis of
Left: Cell lysa...