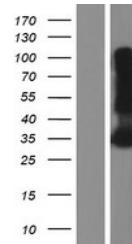


## Product Datasheet

# LY6G6F Human Over-expression Lysate (orb1342216)

<b>Description</b>	Transient overexpression lysate of lymphocyte antigen 6 complex, locus G6F (LY6G6F)
<b>Target</b>	LY6G6F
<b>Storage</b>	The lysate is shipped with dry ice. The lysate is shipped with dry ice. Upon receiving, store the sample at -80°C. Also after dilution, the protein sample should be aliquoted and stored at -80°C for long term storage. Avoid repeated freeze-thaw cycles. Lysate samples can be diluted with 2xSDS Sample Buffer provided. Lysate samples are stable for 12 months from the date of receipt when stored at -80°C.
<b>Tag</b>	C-Myc/DDK
<b>Note</b>	For research use only
<b>Source</b>	Human
<b>MW</b>	32.46 kDa
<b>Uniprot ID</b>	<a href="#">Q5SQ64</a> , <a href="#">A0A1L6Z9Z3</a>
<b>Expiration Date</b>	6 months from date of receipt.



Western blot analysis of Left: Cell lysa...