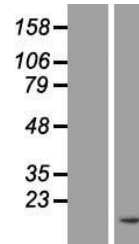


Product Datasheet

ATP5PF Human Over-expression Lysate (orb1342215)

Description	Transient overexpression lysate of ATP synthase, H ⁺ transporting, mitochondrial F0 complex, subunit ...
Target	ATP5PF
Storage	The lysate is shipped with dry ice. The lysate is shipped with dry ice. Upon receiving, store the sample at -80°C. Also after dilution, the protein sample should be aliquoted and stored at -80°C for long term storage. Avoid repeated freeze-thaw cycles. Lysate samples can be diluted with 2xSDS Sample Buffer provided. Lysate samples are stable for 12 months from the date of receipt when stored at -80°C.
Tag	C-Myc/DDK
Note	For research use only
Source	Human
MW	12.6 kDa
Uniprot ID	Q6IB54 , P18859 , Q6NZ59
Expiration Date	6 months from date of receipt.



Western blot analysis of
Left: Cell lysa...