
Product Datasheet

FPR1 antibody (orb13410)

Description

FPR1 antibody

Species/Host

Rabbit

Reactivity

Human, Mouse, Porcine, Rat

Conjugation

Unconjugated

Tested Applications

ICC, IF, IHC-P, WB

Immunogen

KLH conjugated synthetic peptide derived from human FPR1. Please contact us for the exact immunogen sequence. The peptide is available as orb12908.

Target

FPR1

Form/Appearance

10 mM PBS, 0.02% sodium azide

Concentration

- 100 µg (in 200 µl): 0.5 mg/ml- 200 µg (in 400 µl): 0.5 mg/ml

Storage

Store at 4°C for up to two weeks. For long term storage, aliquot and store at -20°C, avoid freeze/thaw cycles.

Note

For research use only

Isotype

IgG

Clonality

Polyclonal

Purity

Polyclonal antibodies are purified by peptide affinity chromatography

MW

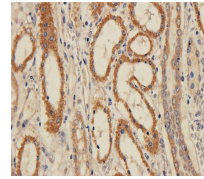
38 kDa

Uniprot ID
[P21462](#)
NCBI
[001193306](#), [001180235](#), [11](#)
Entrez
[2357](#)
Dilution Range

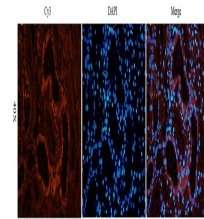
WB: 1:200-1000, IHC-P: 1:100-700, IF/ICC: 1:100-700 (based on 0.5 mg/ml)

Expiration Date

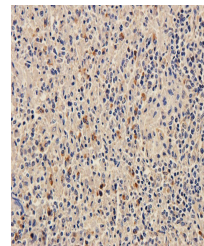
12 months from date of receipt.



Immunohistochemical staining of pig kidn...



IF analysis of pig kidney tissue using a...



Immunohistochemical staining of paraffin...