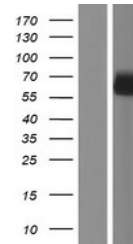


Product Datasheet

SYNC Human Over-expression Lysate (orb1339828)

Description	Transient overexpression lysate of syncoilin, intermediate filament protein (SYNC), transcript varia...
Target	SYNC
Storage	The lysate is shipped with dry ice. The lysate is shipped with dry ice. Upon receiving, store the sample at -80°C. Also after dilution, the protein sample should be aliquoted and stored at -80°C for long term storage. Avoid repeated freeze-thaw cycles. Lysate samples can be diluted with 2xSDS Sample Buffer provided. Lysate samples are stable for 12 months from the date of receipt when stored at -80°C.
Tag	C-Myc/DDK
Note	For research use only
Source	Human
MW	54.7 kDa
Uniprot ID	Q9H7C4
Expiration Date	6 months from date of receipt.



Western blot analysis of
Left: Cell lysa...