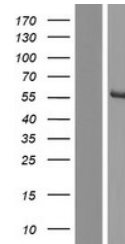


Product Datasheet

AGXT2L1 (ETNPPL) Human Over-expression Lysate (orb1339820)

Description	Transient overexpression lysate of alanine-glyoxylate aminotransferase 2-like 1 (AGXT2L1), transcrip...
Target	ETNPPL
Storage	The lysate is shipped with dry ice. The lysate is shipped with dry ice. Upon receiving, store the sample at -80°C. Also after dilution, the protein sample should be aliquoted and stored at -80°C for long term storage. Avoid repeated freeze-thaw cycles. Lysate samples can be diluted with 2xSDS Sample Buffer provided. Lysate samples are stable for 12 months from the date of receipt when stored at -80°C.
Tag	C-Myc/DDK
Note	For research use only
Source	Human
MW	54.9 kDa
Uniprot ID	Q8TBG4
Expiration Date	6 months from date of receipt.



Western blot analysis of
Left: Cell lysa...