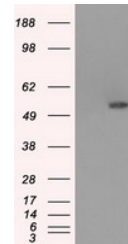


## Product Datasheet

# Glucose Transporter 5 GLUT5 (SLC2A5) antibody (orb1338326)

<b>Description</b>	Mouse monoclonal antibody to Glucose Transporter 5 GLUT5 (SLC2A5)
<b>Species/Host</b>	Mouse
<b>Reactivity</b>	Human
<b>Conjugation</b>	Unconjugated
<b>Tested Applications</b>	IF, IHC, WB
<b>Immunogen</b>	Full length human recombinant protein of human SLC2A5 (NP_003030) produced in HEK293T cell.
<b>Target</b>	SLC2A5
<b>Storage</b>	Maintain refrigerated at 2-8°C for up to 2 weeks. For long term storage store at -20°C in small aliquots to prevent freeze-thaw cycles.
<b>Note</b>	For research use only
<b>Application notes</b>	For reconstitution, we recommend adding 100uL distilled water to a final antibody concentration of about 1 mg/mL. To use this carrier-free antibody for conjugation experiment, we strongly recommend performing another round of desalting process.
<b>Isotype</b>	IgG1
<b>Clonality</b>	Monoclonal
<b>MW</b>	55.0 kDa
<b>Uniprot ID</b>	<a href="#">P22732</a>
<b>NCBI</b>	<a href="#">NM_003039</a>
<b>Dilution Range</b>	WB 1:1000~2000, IHC 1:50, IF 1:100
<b>Expiration Date</b>	12 months from date of receipt.



Western blot analysis of HEK293T cells w...