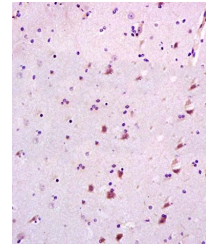


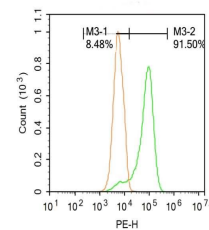
Product Datasheet

CYP3A4 antibody (orb13361)

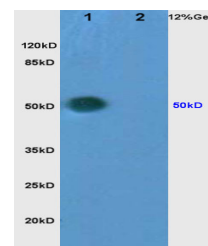
Description	CYP3A4 antibody
Species/Host	Rabbit
Reactivity	Human, Rat
Conjugation	Unconjugated
Tested Applications	FC
Immunogen	KLH conjugated synthetic peptide derived from human CYP3A4 (18-120/503 aa)
Target	CYP3A4
Preservatives	0.01M TBS(pH7.4) with 1% rAlbumin, 0.03% Proclin300 and 50% Glycerol.
Form/Appearance	Liquid
Concentration	1mg/ml
Storage	Shipped at 4°C. Store at -20 °C for one year. Avoid repeated freeze/thaw cycles.
Note	For research use only
Isotype	IgG
Clonality	Polyclonal
MW	55 kDa
Uniprot ID	P08684
Dilution Range	Flow-Cyt=1ug/test, WB=1:500-2000, IHC-P=1:100-500, IHC-F=1:100-500, IF=1:100-500
Expiration Date	12 months from date of receipt.



Immunohistochemical analysis of formalin...



Flow cytometric analysis of Raji cells
I...



Western blot analysis of rat brain lysat...