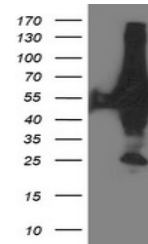


Product Datasheet

XPNPEP3 antibody (orb1335937)

Description	Mouse monoclonal antibody to XPNPEP3
Species/Host	Mouse
Reactivity	Canine, Human, Monkey, Mouse, Rat
Conjugation	Unconjugated
Tested Applications	FC, IF, IHC, WB
Immunogen	Full length human recombinant protein of human XPNPEP3(NP_071381) produced in HEK293 cell.
Target	XPNPEP3
Storage	Maintain refrigerated at 2-8°C for up to 2 weeks. For long term storage store at -20°C in small aliquots to prevent freeze-thaw cycles.
Note	For research use only
Application notes	For reconstitution, we recommend adding 100uL distilled water to a final antibody concentration of about 1 mg/mL. To use this carrier-free antibody for conjugation experiment, we strongly recommend performing another round of desalting process.
Isotype	IgG2a
Clonality	Monoclonal
MW	56.9 kDa
Uniprot ID	Q9NQH7
NCBI	NM_022098
Dilution Range	WB 1:500~2000, IHC 1:150, IF 1:100, FLOW 1:100
Expiration Date	12 months from date of receipt.



Western blot analysis of HEK293T cells w...