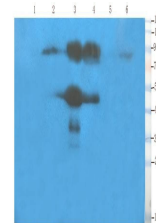


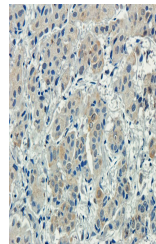
Product Datasheet

CD155 antibody (orb13359)

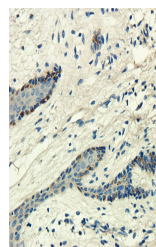
Description	CD155 antibody
Species/Host	Rabbit
Reactivity	Human, Mouse, Rat
Conjugation	Unconjugated
Tested Applications	IHC-P, WB
Immunogen	KLH conjugated synthetic peptide derived from human CD155. Please contact us for the exact immunogen sequence. The peptide is available as orb12907.
Target	CD155
Form/Appearance	10 mM PBS, 0.02% sodium azide
Concentration	- 100 µg (in 200 µl): 0.5 mg/ml- 200 µg (in 400 µl): 0.5 mg/ml
Storage	Store at 4°C for up to two weeks. For long term storage, aliquot and store at -20°C, avoid freeze/thaw cycles.
Note	For research use only
Isotype	IgG
Clonality	Polyclonal
Purity	Polyclonal antibodies are purified by peptide affinity chromatography
MW	45 kDa
Uniprot ID	P15151
NCBI	006505 , 31 , 006496
Entrez	5817
Dilution Range	IHC-P: 1:50-400, WB: 1:200-1000
Expiration Date	12 months from date of receipt.



Western blot analysis of rat spinal cord...



IHC-P image of human breast cancer tissue...



IHC-P staining of human breast cancer ti...