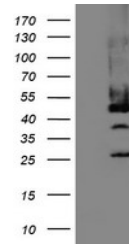


Product Datasheet

Mannose Phosphate Isomerase (MPI) antibody (orb1334852)

Description	Mouse monoclonal antibody to Mannose Phosphate Isomerase (MPI)
Species/Host	Mouse
Reactivity	Human, Rat
Conjugation	Unconjugated
Tested Applications	FC, IHC, WB
Immunogen	Full length human recombinant protein of human MPI(NP_002426) produced in HEK293T cell.
Target	MPI
Storage	Maintain refrigerated at 2-8°C for up to 2 weeks. For long term storage store at -20°C in small aliquots to prevent freeze-thaw cycles.
Note	For research use only
Application notes	For reconstitution, we recommend adding 100uL distilled water to a final antibody concentration of about 1 mg/mL. To use this carrier-free antibody for conjugation experiment, we strongly recommend performing another round of desalting process.
Isotype	IgG1
Clonality	Monoclonal
MW	46.5 kDa
Uniprot ID	P34949
NCBI	NM_002435
Dilution Range	WB 1:2000, IHC 1:150, FLOW 1:100
Expiration Date	12 months from date of receipt.



Western blot analysis of HEK293T cells w...