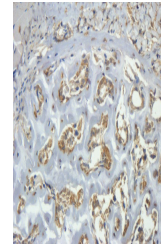


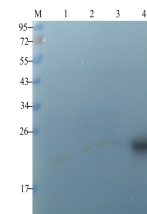
Product Datasheet

CLEC1B antibody (orb13344)

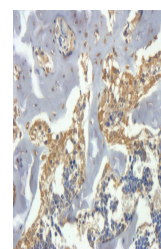
Description	CLEC1B antibody
Species/Host	Rabbit
Reactivity	Bovine, Human, Mouse, Rat
Conjugation	Unconjugated
Tested Applications	ELISA, IHC-P, WB
Immunogen	KLH conjugated synthetic peptide derived from human CLEC1B. Please contact us for the exact immunogen sequence. The peptide is available as orb374762.
Target	CLEC1B
Form/Appearance	10 mM PBS, 0.02% sodium azide
Concentration	- 100 µg (in 200 µl): 0.5 mg/ml- 200 µg (in 400 µl): 0.5 mg/ml
Storage	Store at 4°C for up to two weeks. For long term storage, aliquot and store at -20°C, avoid freeze/thaw cycles.
Note	For research use only
Isotype	IgG
Clonality	Polyclonal
Purity	Polyclonal antibodies are purified by peptide affinity chromatography
MW	27 kDa
Uniprot ID	Q9P126
NCBI	001092901 , 11 , 001099431
Entrez	51266
Dilution Range	IHC-P: 1:200, WB: 1:200-1000
Expiration Date	12 months from date of receipt.



IHC-P image of mouse bone marrow tissue ...



Western blot analysis of mouse spinal co...



IHC-P staining of mouse bone marrow tiss...